

ART JAPANESEQUE
NON-WOVEN WALLCOVERINGS
MADE IN JAPAN



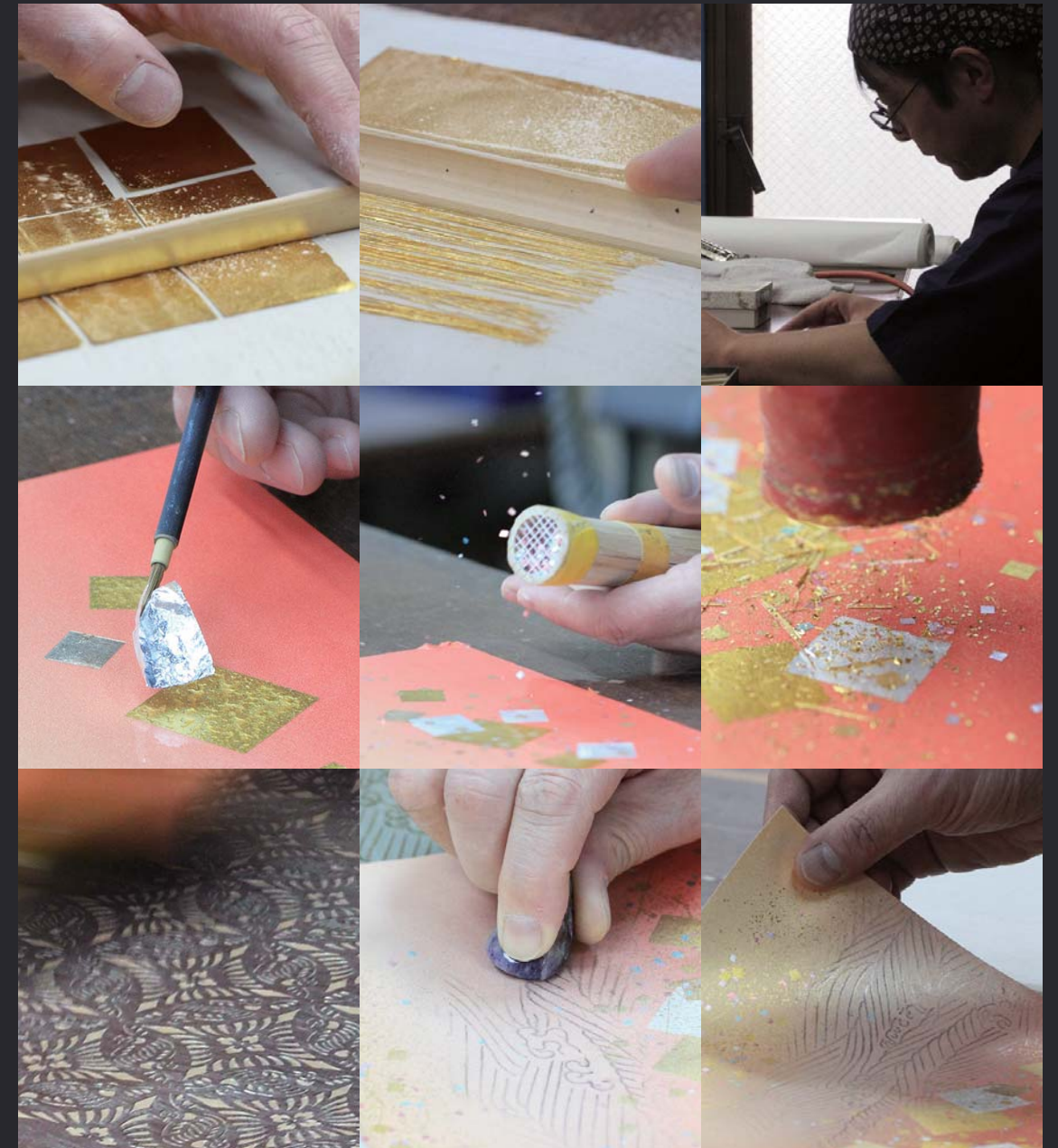
KIKUCHI FUSUMA MANUFACTURING Co.,LTD.





INNOVATION OF JAPANESE TRADITIONAL ART

ABOUT



We are a Japanese interior commodity manufacturer founded in 1924. Since ancient times, we have been designing and printing "fusuma paper" that has been popular in Japanese homes and temples. While introducing the latest digital printing presses, In order to inherit Japanese traditional crafts and its advanced technique, we continue to make hand-made art work. This is Japan's unique decorative technique using "gilt" and "silver foil" with "gold and silver sandstone work" expressing overwhelming feeling of luxury and glow sandstone effects.



TATSUTA RIVER 竜田川

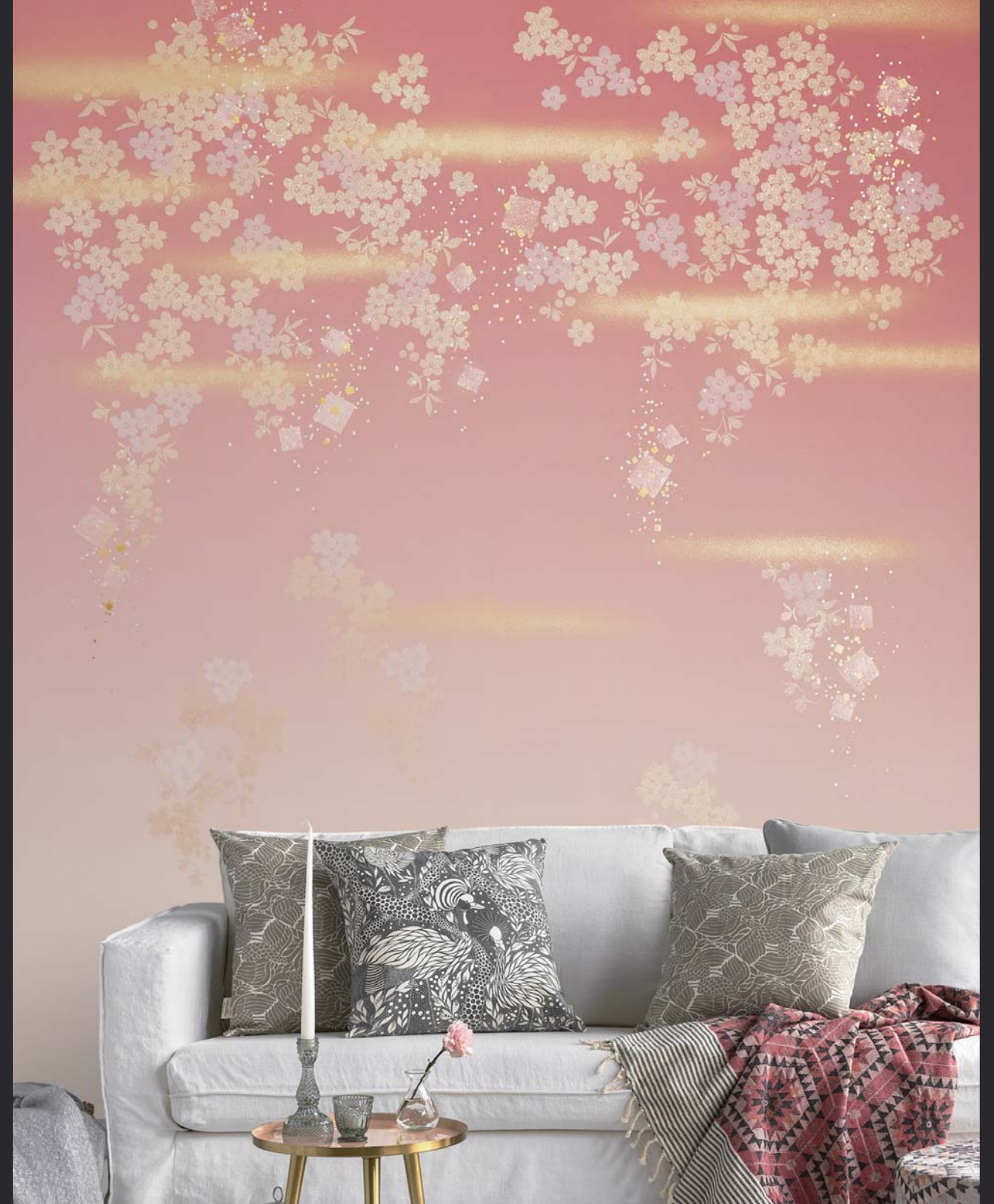
AJPRM01

In Japan, These are designs that show the flow of autumn leaves and rivers from ancient times. This is called "Tatsuta River". This design expresses the Tatsuta River at dusk.

Art size : W1.8m x H2.0m

Process :

1. Digital printing (HP Latex 3600)
2. Silk printing
3. Gilt and silver foil effects (Japan's unique decorative technique)



CHERRY BLOSSOM 桜

AJPRM02

This is Image of cherry blossoms blooming in gorgeous old capital of Japan. It represents cherry blossoms blooming all over the area under the spring sun.

Art size : W1.8m x H2.0m

Process :

1. Digital printing (HP Latex 3600)
2. Silk printing
3. Gilt and silver foil effects (Japan's unique decorative technique)



FUJI 秋草に富士

AJPRM03

Mt. Fuji has been regarded as Japan's godfather for a very long time and it has many influences on Japanese culture. This design is an image of Fuji over the plains where autumn flowers grow.

Art size : W1.8m x H2.0m

Process :

1. Digital printing (HP Latex 3600)
2. Silk printing
3. Gilt and silver foil effects (Japan's unique decorative technique)



SNOW RING 雪輪

AJPRM04

The snow pattern was designed by combining the shape of snow crystals in the 19th century with the older snow design. This design shows a scene where the snow heavily fall and expresses a feeling of lost and sorrow.

Art size : W1.8m x H2.0m

Process :

1. Digital printing (HP Latex 3600)
2. Silk printing
3. Gilt and silver foil effects (Japan's unique decorative technique)



CRANE 波と鶴 AJPRM05

It has long been known as a symbol of longevity in Japan.
This design is an image of a crane dancing in the clear night sky of the air.
Art size : W1.8m x H2.0m

Process :
1.Digital printing(HP Latex 3600)
2.Silk printing
3.Gilt and silver foil effects(Japan's unique decorative technique)





STANDARD SERIES

Art Japanesque Wallcoverings is a wallpaper designing Japanese traditional patterns in a modern style. The tasteful pattern and chic color variation will produce a fine space.



Roll size : 0.45 x 10m
Repeat : aprx. 0.35 m →←



AJSTD01 LT



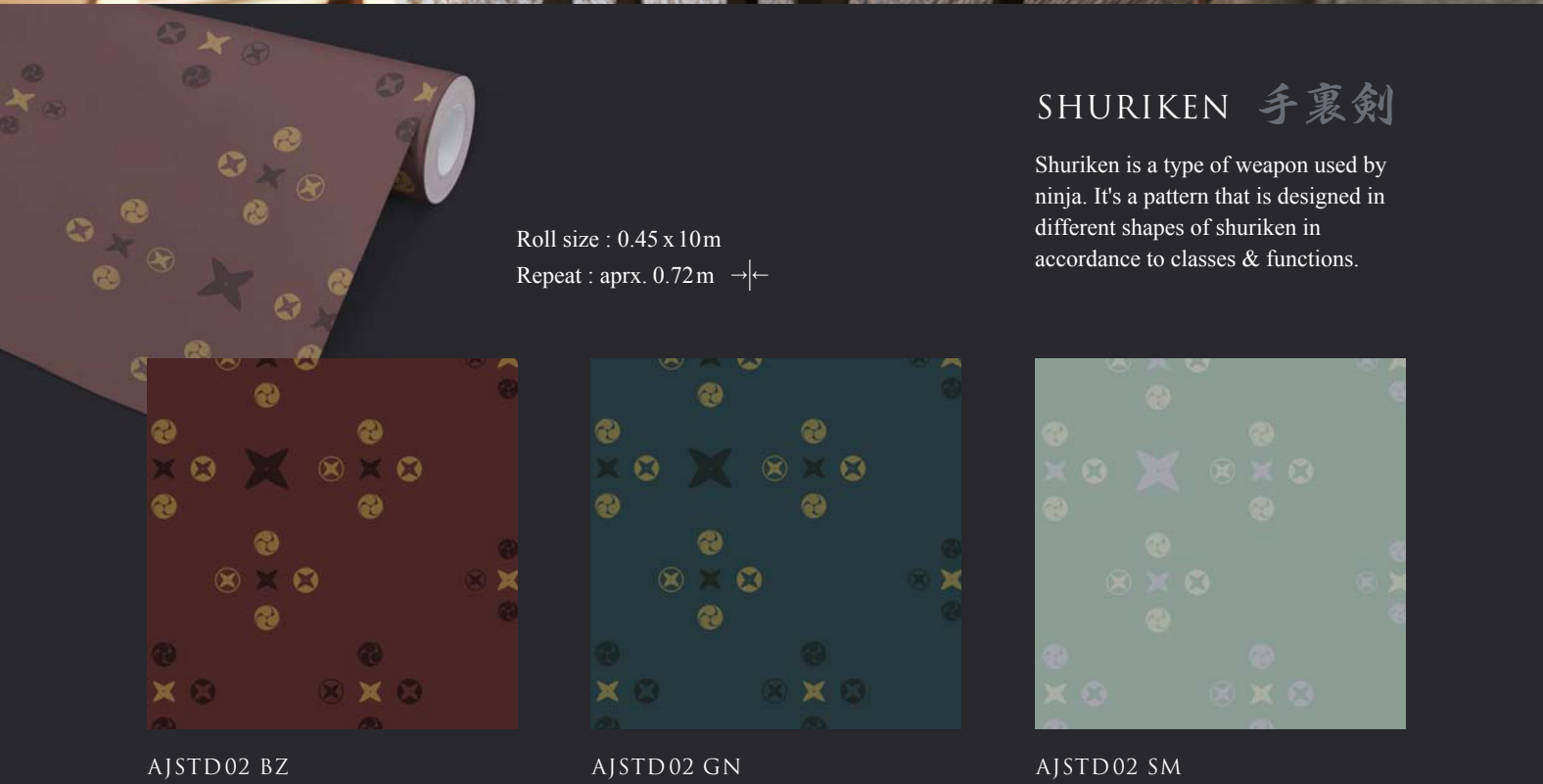
AJSTD01 DK



AJSTD01 SM

TAKESASA 竹筴

Because bamboo is straight and it is hard to break easily, also it has empty space inside, it represents the indomitable spirit and pure.





Roll size : 0.45 x 10m
Repeat : aprx. 0.35m →←

KUCHIKI-GUMO 朽木雲

It's a pattern that we designed which looks like clouds changing shape on wood when you look at it vertically. It shows the Japanese feeling of beauty that we find the change.



AJSTD04 BL



AJSTD04 CH



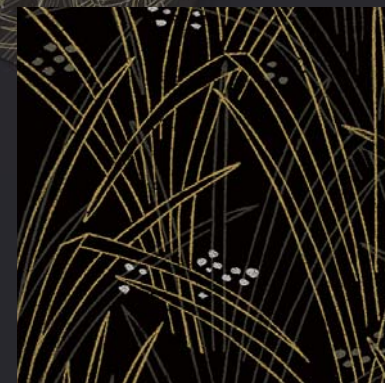
AJSTD04 GD



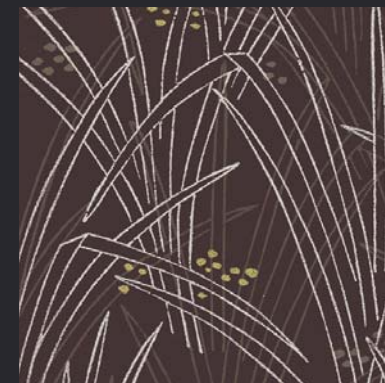
Roll size : 0.45 x 10m
Repeat : aprx. 0.35m →←

KICHIJO-SOU 吉祥草

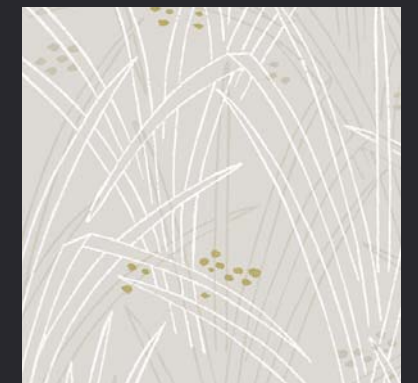
It's said that when this flower blooms, happiness comes. It's a pattern that has been used as an amulet to ward off bad spirits.



AJSTD05 BK



AJSTD05 BN

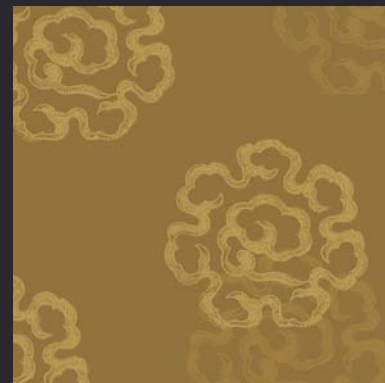


AJSTD05 IV

YAKUMO 八雲

These are clouds which represent Buddha's coming.
It symbolizes hope and auspiciousness.

Roll size : 0.45 x 10m
Repeat : aprx. 0.72m →←



AJSTD06 GD



AJSTD06 PU



AJSTD06 DK



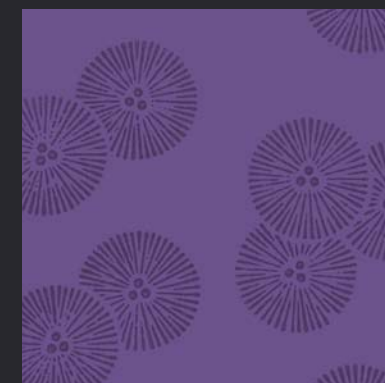
Roll size : 0.45 x 10m
Repeat : aprx. 0.35m →←

KARAMATSU 唐松

A rare Japanese pine tree that loses its needles in the winter.
It is a pattern that shows appearance of new soft shoots.



AJSTD07 CH



AJSTD07 VT



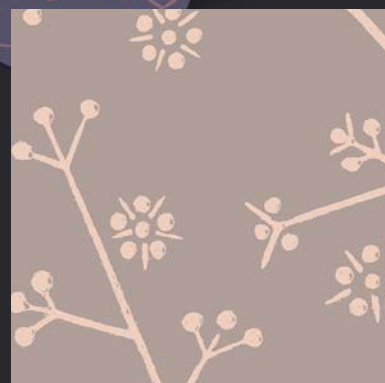
AJSTD07 OR



Roll size : 0.45 x 10m
Repeat : aprx. 0.35m →←

UMEGAE 梅ヶ枝

These are plum blossoms which blooms earlier than any flowers in spring. It's a pattern which means spring arrival and the birth of new life.



AJSTD08 PK



AJSTD08 VT



AJSTD08 OL

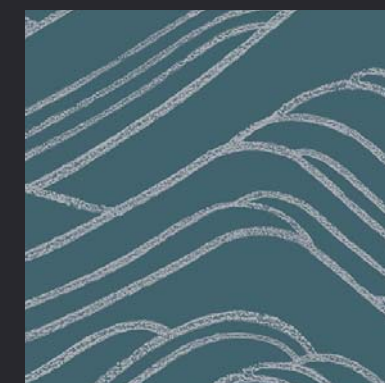


OH-NAMI 大波

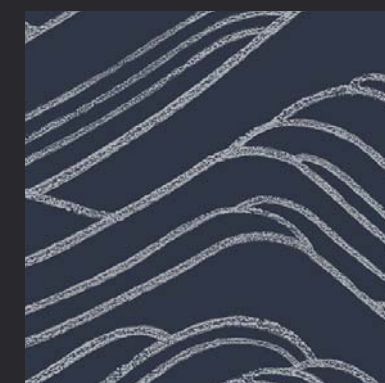
It's a pattern that expresses a momentary appearance of big waves with a bold curve. It was designed by Kohlin Ogata, an artist from the Edo period.



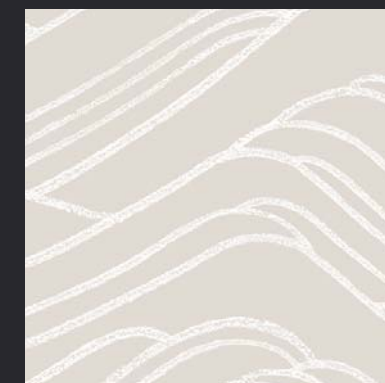
Roll size : 0.45 x 10m
Repeat : aprx. 0.35m →←



AJSTD09 TU



AJSTD09 NV



AJSTD09 IV



Roll size : 0.45 x 10m
Repeat : aprx. 0.35m →←

NAMI-CHIDORI 波千鳥

These are plovers over coming big and small seawaves.

This pattern has been popular as an auspicious motif representing peaceful and safe married life and happiness.



AJSTD10 GY



AJSTD10 YL



AJSTD10 RD

PATTERN LIST

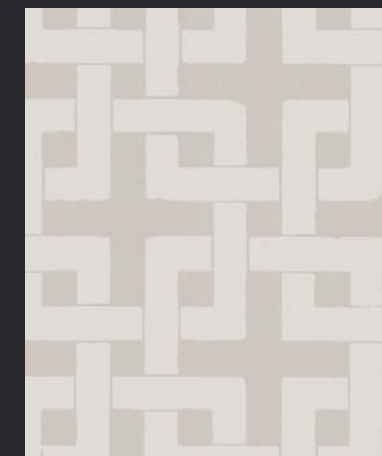
KAKU-TSUNAGI 角つなぎ



AJSTD11 GN



AJSTD11 BZ

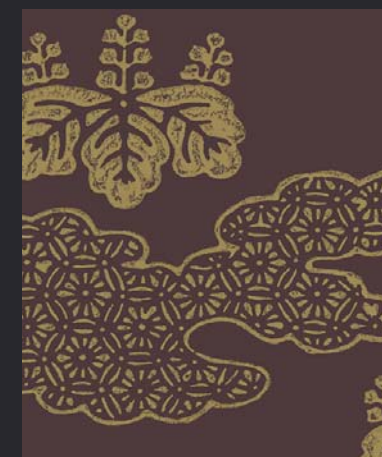


AJSTD11 IV

KIRI 桐



AJSTD12 BL



AJSTD12 BN

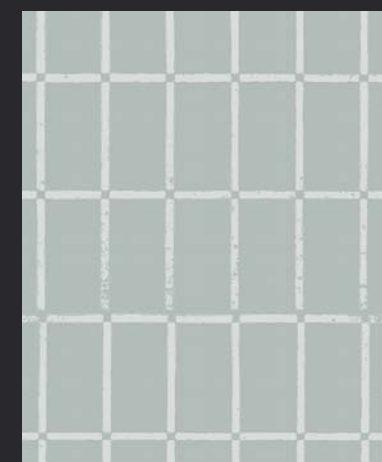


AJSTD12 IV

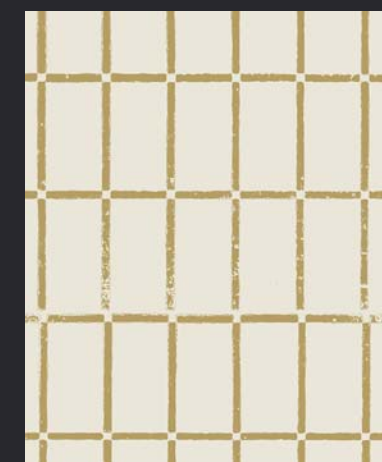
KOUSHI 格子



AJSTD13 GN



AJSTD13 BL



AJSTD13 GD

PATTERN LIST

SAKURA 桜



AJSTD 14 PK



AJSTD 14 RD



AJSTD 14 BN

KUMO-TACHUWAKU 雲立涌



AJSTD 15 RD



AJSTD 15 GN



AJSTD 15 SM

KAWARI-YUKIWA 変わり雪輪



AJSTD 16 GY



AJSTD 16 VT



AJSTD 16 BG

CONTACT ADDRESS

Kikuchi Fusuma Manufacturing Co., Ltd.
1355, Nissatocho
Soka-shi Saitama 340-0031
Japan

Phone +81 489251245
Fax +81 489258822
E-mail customer@fusuma.co.jp
www.fusuma.co.jp



The contents of the publication include products under development. Specifications are subject to change without notice, so please be forewarned. The printed item may differ from the actual color on account of printing.